



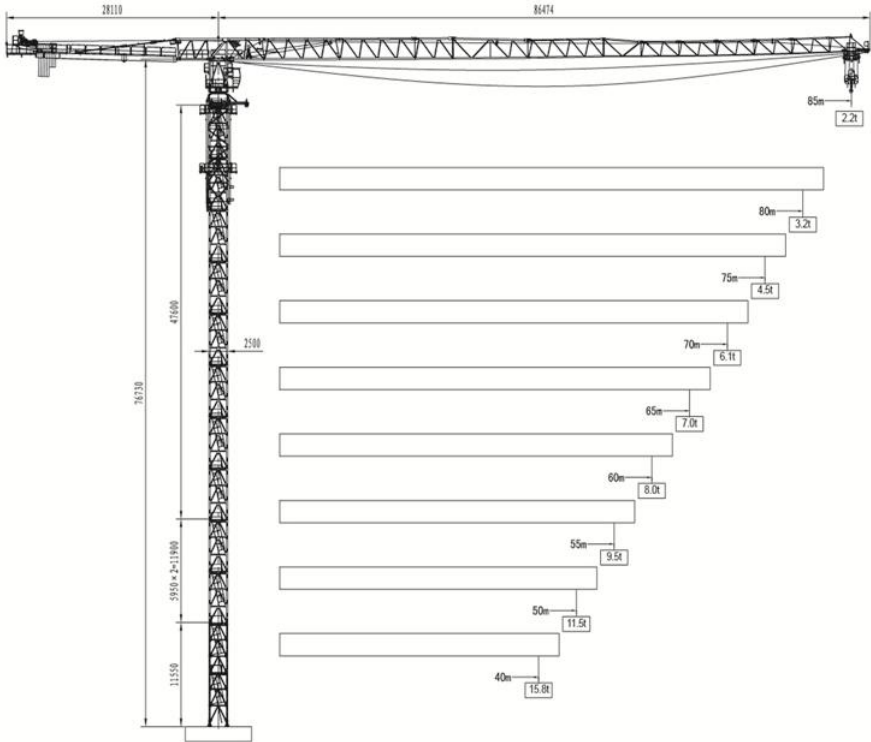
平头式塔式起重机 设备配置与技术参数

QTP500

本数据仅供参考，如有更改，恕不另行通知

This data is for informational purposes only, and is subject to change without prior notice

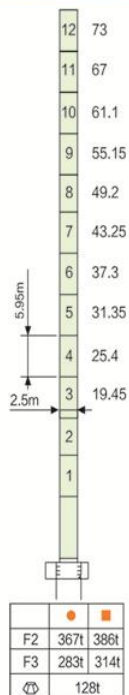
外形尺寸 Outline Dimensions



载荷特性表 Load Diagrams 20t

R _{rel}	Fail	R.C.	C _{max} (t)	20	25	30	35	40	45	50	55	60	65	70	75	80	85
85m		15.7	20.0	15.3	11.7	9.41	7.73	6.47	5.49	4.71	4.06	3.53	3.08	2.69	2.35	2.06	1.80
		28.8	10.0	10.0	10.0	9.53	7.9	6.7	5.76	4.5	4.38	3.87	3.5	3.06	2.73	2.45	2.2
80m		18.2	20.0	17.9	13.9	11.2	9.25	7.85	6.73	5.83	5.1	4.48	3.97	3.52	3.14	2.80	
		33.5	10.0	10.0	10.0	10.0	9.34	8.1	7.01	6.1	5.43	4.83	4.33	3.9	3.53	3.2	
75m		21.2	20.0	20.0	16.6	13.5	11.24	9.57	8.27	7.23	6.37	5.66	5.06	4.55	4.1		
		39.4	10.0	10.0	10.0	10.0	10.0	9.84	8.57	7.55	6.72	6.03	5.44	4.94	4.5		
70m		24.2	20.0	20.0	19.4	15.8	13.25	11.34	9.85	8.66	7.69	6.88	6.19	5.6			
		45.7	10.0	10.0	10.0	10.0	10.0	10.0	10.0	9.16	8.19	7.38	6.69	6.1			
65m		25.2	20.0	20.0	20.0	16.58	13.93	11.94	10.4	9.17	8.15	7.31	6.6				
		48.1	10.0	10.0	10.0	10.0	10.0	10.0	10.0	9.57	8.55	7.71	7.0				
60m		26.2	20.0	20.0	20.0	17.25	14.52	12.48	10.88	9.61	8.57	7.7					
		49.6	10.0	10.0	10.0	10.0	10.0	10.0	10.0	9.91	8.87	8.0					
55m		27.9	20.0	20.0	20.0	18.5	15.61	13.4	11.76	10.41	9.3						
		52.6	10.0	10.0	10.0	10.0	10.0	10.0	10.0	10.0	9.5						
50m		30.4	20.0	20.0	20.0	20.0	17.18	14.81	12.87	11.5							
40m		32.2	20.0	20.0	20.0	20.0	18.31	15.8									

塔身截面 Masts

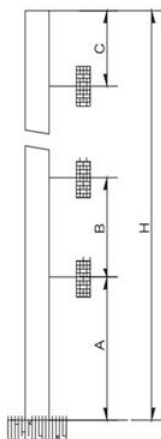


● 工作状态支反力 Reactions in service

■ 非工作状态支反力 Reactions out of service

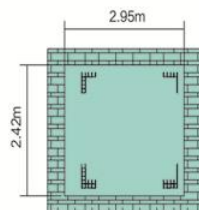
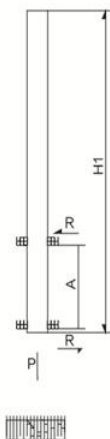
⊕ 不含平衡重及压重塔机重量 Total weight of free standing crane (exclude Counter weight & ballast)

附着位置及塔机高度 Anchorage



Mast	A	B	C	H
	60m	42m	42m	195 >195m*

附着道数: Number of tie collar= $(H-A-C)/B+1$



H1	A	R	P
48m	16m	25t	144t

机构 Mechanisms 20t

名称	机构代号	工作速度 (m/min)		起重量(t)	容绳量(m)	电机功率
起升 Hoisting	75LVF50	双绳 2 fall	0-35	10.0	460 >460*	75
			0-70	5.0		
		四绳 4 fall	0-17.5	20.0		
			0-35	10.0		
变幅机构 Trolleying	11DF10	0-56			11	
回转机构 Slewing	RVF7.5	0-0.8			4 × 11	
电源 Power	380V (± 10%) /50Hz*					

*请与制造商联系 contact us please



山东大汉建设机械股份有限公司

地址：山东省济南市章丘区明水经济开发区赭山工业园

电话：+86 (531) 83260789

网址：www.dhtj.com

邮编：250200

Shandong Dahan Construction Machinery Co.,Ltd.

Add : Zheshan Industrial Part,Mingshui Development
Zone,Zhangqiu,Jinan City,Shandong Province,China

TEL : +86 (531) 83260789

Web : [http:// www.dhtj.com](http://www.dhtj.com)

ZIP CODE : 250200